



**Advanced
color capabilities**

**Performant and
robust architecture**

**Industry-leading
print quality**

**Dynamic workflow
capabilities**

**Power to
customize**

Adobe PDF Print Engine

The rendering platform for the Adobe PDF print experience

The Adobe PDF print experience starts when a job is designed in Adobe Creative Cloud applications, managed in Adobe Acrobat, and then rendered for print by Adobe PDF Print Engine. This end-to-end Adobe workflow maximizes the potential of every press. Adobe PDF Print Engine powers print production across all industry segments, driving over 200,000 presses and proofers around the globe: offset, gravure, flexographic, inkjet, electrostatic, and nanographic. PDF Print Engine is built on a performant and robust architecture that delivers advanced color capabilities, industry-leading print quality, dynamic workflow capabilities, and the power to customize.

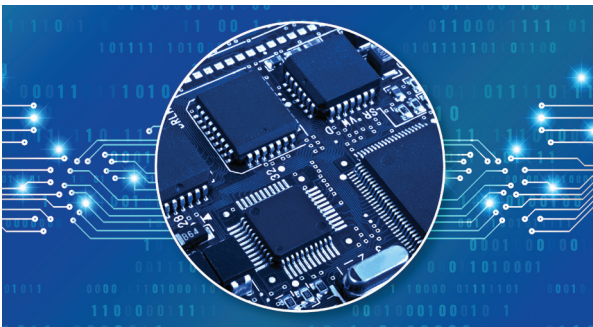
Adobe PDF Print Engine

Adobe PDF Print Engine is the industry's leading rendering technology that maximizes the print potential of every press. It powers workflows in all industry segments, driving over 200,000 presses and proofers around the globe: offset, gravure, flexographic, inkjet, electrostatic, and monographic. Advanced color technologies ensure efficient and optimal rendering of transparency blending, overprinting, spot colors, trapping, etc. PDF Print Engine software is optimized and updated to utilize the latest computer hardware and imaging science fully. Today, PDF Print Engine is the fastest platform for rendering complex graphics, Variable Data Printing, and variable item & lot printing.



Designers continue to push creative boundaries with the latest features in Adobe Photoshop, Illustrator, InDesign, and Adobe Express. The PDF Print Engine is guaranteed to render them with full fidelity to the designer's intent on any surface and in any manufacturing cycle.

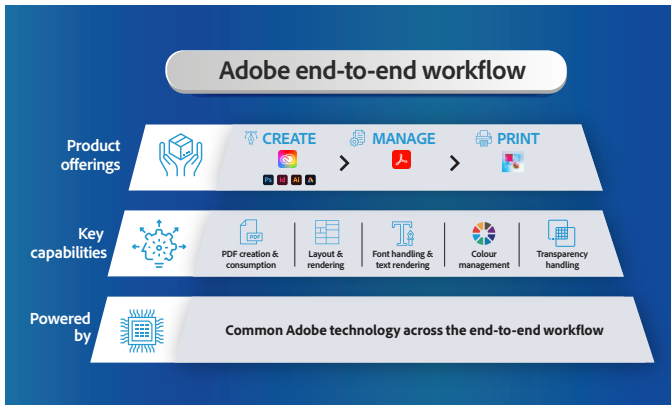
Mercury RIP Architecture



The Mercury RIP architecture is a parallel processing framework for dynamically managing multiple Adobe PDF Print Engine instances, working in tandem on multi-core, networked, or cloud platforms. It's a scalability platform optimized for outputting variable data printing jobs to the fastest digital presses today and tomorrow. It's most useful for packaging, industrial, personalized marketing communications, and

statements. A Mercury-certified system maximizes hardware efficiency, ensuring the most efficient use of system resources. Processing of jobs, pages, and complete signatures occurs in parallel and can be load-balanced so that no CPUs remain idle while jobs are waiting to be rendered. With the Mercury RIP architecture, PDF Print Engine can scale up to drive high-volume production on a single press or across multiple presses.

Reliability = Predictability + Consistency



Adobe end-to-end Workflow

Customers who build their print jobs with Adobe applications such as Photoshop, Illustrator, InDesign, and Express benefit from consistent technology across the end-to-end job lifecycle. Using the same Adobe technology to create, manage, and print results in reliable reproduction. PDF Print Engine also excels at rendering jobs created in non-Adobe application.

Leading Print OEMs trust Adobe PDF Print Engine



"With more than 2 million Fiery DFEs shipped to date, we know what it takes to get the best performance and image quality. That is why we are committed to working with Adobe to leverage continuous improvement in performance and output quality in Adobe PDF Print Engine."



John Henze
 VP, Sales and Marketing



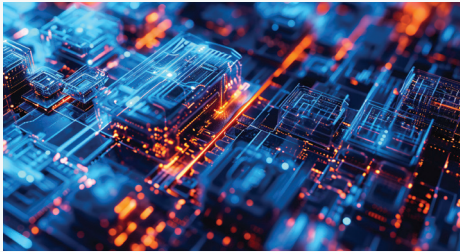
Adobe PDF Print Engine is built into prepress solutions from the industry's top vendors. It offers reliable, consistent print reproduction for every-job type – the best guarantee of customer satisfaction and success.

Core strengths of Adobe PDF Print Engine



Advanced color capabilities

State-of-the-art color management and powerful color controls. Manage process and special inks. Maximize gamut and visual impact by accounting for substrates and inks.



Performant and robust architecture

Engineered for speed, scalability, and reliability. Take full advantage of available system resources to render complex graphics and jobs at record speed.



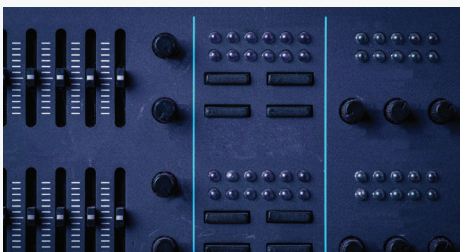
Industry-leading print quality

Proprietary processing technologies for superior reproduction of every element type: text, graphics, images, and smooth shades, either stand-alone or in combination.



Dynamic workflow capabilities

Flexibility to support specialized job and device requirements. Functionality to address a broad range of job types and production environment workflows.



Power to customize

Customizable integration points for adding proprietary value. Differentiate solutions to build products that stand out.

To learn more, visit <https://www.adobe.com/products/pdfprintengine/highlights.html>

What's new in Adobe PDF Print Engine



Control, automate, and optimize full-gamut rendering

Version 6 of PDF Print Engine adds enhanced color processing controls for maximum leverage of press capabilities which increase efficiency and reproduction quality across all job types. These latest innovations will benefit commercial print production, package printing, finishing, textile manufacturing, variable printing, large format signage, and industrial applications.

- Streamlined processing for Expanded Color Gamut presses (ECG)
- Corporate brand colors using spectral values
- Sophisticated image scaling
- Integration with post-press finishing
- Auto-generate plates for white underlay and varnishes
- Enhanced variable data processing for direct marketing, packaging and versioning
- Edge-to-edge printing for textile designs
- Support for special colors in 16-bit images
- Support for distributed RIP architectures utilizing more than 64 cores
- Support for Apple Silicon (M1 chip) and AMD Ryzen

Product Specifications



Every market segment

- Packaging and label printing
- Textile printing
- Industrial printing and embellishing
- Graphic arts and commercial printing
- Digital production printing
- Large format printing
- Variable data printing
- Proofing



Input file types

- PDF, PDF 2.0, PDF/X-6, PDF/VT-3
- PostScript (via Adobe PDF Converter SDK)
- TIFF and other image formats
- Job ticketing via JDF



Every job type

- Graphically rich content produced with Adobe Creative Cloud and non-Adobe applications
- Consumer packaged goods, grocery, electronics, pharmaceuticals, etc.
- Customer correspondence, direct mail
- Brochures
- Annual reports
- Books
- Signage
- CAD, GIS maps, architectural blueprints
- Manufacturing - direct to object
- Apparel - direct to garment



Parallel processing

- Mercury RIP architecture branding and certification
- Dynamic distributed RIP models for the latest high-end multi-core, multi-blade, networked cluster, RIP farm, and multi-press systems
- Tile parallel processing for large format jobs
- Maximum use of concurrency across interpretation and rendering



System requirements

- Intel i5/i7/Xeon or higher/Mac M1 or higher/AMD Ryzen 3 PRO or higher
- RAM: 1 GB minimum, 2 GB+ recommended for each PDF Print Engine instance
- Hard disk required



Solutions

- Hardware DFE (Digital Front End)
- Software RIP
- Prepress workflow system
- Raster preview
- Proofing
- Industrial printing



Operating systems (64-bit only)

- PDF, PDF 2.0, PDF/X-6, PDF/VT-3
- PostScript (via Adobe PDF Converter SDK)
- TIFF and other image formats
- Job ticketing via JDF

Maximise your Return on Investment

With a legacy spanning over four decades, Adobe has consistently led the way in Print and PDF technology, establishing a track record of partner success. Our commitment to delivering world-class customer service and support remains unwavering. Adobe partners closely with you, ensuring you continue delighting your customers. Trust us for a partnership that maximizes your return on investment, combining innovation, experience, and dedicated support.



Open & flexible licensing model

Choose a licensing model (unit-based royalty, fixed fee, subscription, or any other option) that fits your operational and financial preferences.



Highly customizable and platform-agnostic technology

Highly customizable technology designed for fast & easy porting across any platform, architecture, and operating system.



Trusted market leader

Adobe PDF Print Engine is built into prepress solutions from the industry's top vendors. It offers reliable, consistent print reproduction for every-job type – the best guarantee of customer satisfaction and success



Easy onboarding

Intuitive product interface and full engineering support to enable rapid deployment.



One Adobe workflow

Adobe owns the end-to-end content lifecycle – Create in CC, Manage/Preview in Acrobat, Print using Adobe PDF Print Engine.



Future-ready

Extending the power of PDF printing to raster devices via our cloud-ready technology and leveraging the power of AI/ML to support your journey from "Printers" to "Printers + Services" by developing Beyond-RIP Print Services.



Continued commitment, continued innovation

Fully committed to advancing our print technology with continued R&D investment and executive sponsorship. We are here to help you optimize your costs and grow your business.



World-class support

Partner with our world-class engineers, who provide support through workshops, training, technical teleconferences, regular engineering interactions, and more.



Single partner for all your PDL customization and support needs

As your singular, dedicated partner for all PDLs, Adobe can help you optimize costs, ensure swift integration, and faster go-to-market.



Tandem account management

Two dedicated Technical Account Managers - one close to you and another to the Adobe Engineering team.



Decades of consulting experience

Deep domain knowledge and experienced team with vast know-how and expertise.



Build once and deploy for a range of devices

With a one-time development effort, you can tailor Adobe Embedded Print Engine for your entire range of devices.



Co-marketing for market expansion

Work with Adobe to amplify your industry outreach, market expansion, and product launch efforts. Leverage the Adobe brand in your MarCom, webpages, hardware, application UI, and more.



Revolutionizing printing with innovative technologies, since 1984

Adobe revolutionized the world of print by creating PostScript in 1984 and then the Portable Document Format (PDF) 10 years later. From Adobe Creative Cloud (to create content) to Acrobat (to manage content) to Embedded Print Engine (to print content) — Adobe's product portfolio turbocharges the entire print workflow.

Become an Adobe Partner

Does your company manufacture printing equipment, or develop DFE software for rasterizing PDF files? If so, please write to us at pdfprintengine@adobe.com

or visit adobe.com/go/appe



Adobe, the Adobe logo, Acrobat, Adobe Express, Creative Cloud, Illustrator, InDesign, and Photoshop are either registered trademarks or trademarks of Adobe in the United States and/or other countries. All other trademarks are the property of their respective owners.

© 2024 Adobe Inc. All rights reserved.

Adobe Inc, 345 Park Avenue, San Jose, CA 95110 USA